

AIR RESERVOIRS

Product Catalogue



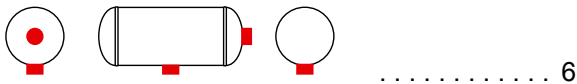
WABCO



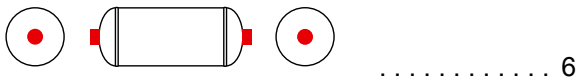
Certificate..... 4

Safety Instructions 5

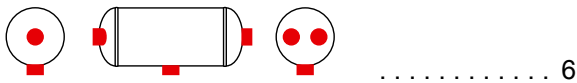
Air Reservoirs for trucks 6



..... 6



..... 6



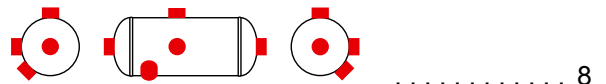
..... 6



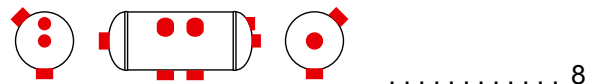
..... 7



..... 7



..... 8



..... 8

© Copyright WABCO 2017

WABCO

Subject to change without notice.
820 010 112 3 10.2017 (en)



Air Reservoirs for trailer 9

 9	 13
 9	 14
 9	 14
 10	 14
 10	 15
 11	 15
 11	 15
 13		Alu. 16
 13		

Clamp bands / Drain valves 17

 17	 17
--	----------	--	----------

Index 18

Cross references 19



Certificate



Operation Manual and Safety Information

for users and first-time buyers

in accordance Annex III Nr.2 of Directive 2014/29/EU of the European Parliament and of the Council

The vessels are only for use in air braking systems and auxiliary systems on motor vehicles and their trailers and are intended to contain only air. The pressure vessels are designed mainly for static operation N 1000 load alternations. Pressure fluctuations over the working pressure level may not exceed 20 % of the max. working pressure. The working pressure of the vessel may momentarily exceed the maximum permissible working pressure by 10 %.

For identification purposes, the vessel is marked with the pressure vessel manufacturer's name, a serial number and the following identification data:

- Type
- Series
- Minimum permissible working temperature (°C)
- Maximum permissible working temperature (°C)
- Volume (litres)
- Maximum permissible working pressure (bar) PS
- Standard: EN 286 - 2: 1992: number and year of norm issue
- EG-symbol in accordance with Annex III Nr. 1.1 of the European Directive 2014/29/EU
- CE (air tanks ≤ 200bar * Liter)
- CE0045 (air tanks > 200bar * Liter)
- Year of manufacture

No welding, heat treatment or any other procedure may be carried out on any part the vessels. The vessels are to be mounted on the vehicle using straps or via brackets fitted on the vessels themselves. Here, it is important that the vessels are not subjected to stresses that could impair their safety in use. Other kind of fastening of pressure vessels are not allowed. The mounting straps must not come into contact with the vessel end welds. Where accessories are fastened directly to the threaded bosses of the vessels a maximum moment of force of 110 Nmm is permissible. This dimension refers to the effective centre-of-gravity distance of the accessory to the end face of the threaded boss. In addition, the mounting instructions of the accessory manufacturers are to be observed.

Material matings must be chosen in such a way that no corrosion can take place between them. If necessary these materials should be separated via elastic and solvent-resistant material. The interior of the steel vessels is corrosion protected. Until they are mounted on the vehicles, the vessels must be stored in a dry place. From the moment the vessel is delivered, the vehicle manufacturer is responsible for the corrosion protection of the vessel. The final top-coat applied by the vehicle manufacturer must guarantee the corrosion protection of the contact surfaces of the threaded mounting bosses and of the mounting accessories.

The interior of the vessels can be inspected through the boss openings. To prevent the build up of condensate, the vessels must be drained off daily, if the vehicle manufacturer does not specify another drainage interval. The vessel is to be mounted in such a way that the drainage valve is at the lowest point of the vessel. If all the requirements with regard to mounting and drainage are adhered to, the vessel is maintenance-free. To clean the vessels, only alkali-free detergents may be used.

With regard to the commissioning and continuing operation in particular the intervals for periodic inspections, national regulations have possibly observed above the mentioned air tank.

Date: 20.04.2016

Rev.:

Manufacturer

Frauenthal Automotive Elterlein GmbH
Scheibenberger Str. 45, D-09481 Elterlein
Tel.: +49(0)37349 662 0, Fax: +49(0)37349 662 37
www.frauenthal-automotive.com



Safety Instructions



CAUTION

- Comply with the valid regulations for the use of air reservoirs.
- Use WABCO air reservoirs only up to the allowed pressure.
- It is strictly forbidden to weld any part on the air reservoir.
- Use WABCO air reservoirs only for Compressed Air Braking Systems in vehicles.
- The air reservoir should be in a low position as possible so that piping can be installed sloping downwards towards the reservoir.
- Drain the air reservoirs by drain valve.
- Usage of proper WABCO clamps is highly recommended.
- The name plate must be covered while painting to keep it readable:

WABCO designs and manufactures devices and systems intended for the braking of Industrial Vehicles. WABCO is since always the privileged partner of the large manufacturers of air reservoirs thanks to the experience, the means implemented, the quality and expertise of its engineers.

WABCO air reservoirs fulfill the requirements of the European Directive 2009/105/EG and are manufactured in accordance with this Directive.

They also conform with the standard EN 286-2 which applies to the tanks of brake and the auxiliary circuit systems of the Industrial vehicles.

All the characteristics of design are defined with precision in the Directive, and reservoir WABCO fulfill the lawful requirements and go even beyond:

- The characteristics of the steels chosen for their ductility, their resistance and their weldability, confèrent with tanks WABCO an exceptional quality.
- The form of the shell and the end cover as well as the process of assembly allow a perfect alignment guaranteeing at the same time the quality of welding and the complete penetration of internal painting.
- The high advanced manufacturing process, welding, anti-corrosion painting, testing procedures guarantee the quality of WABCO air reservoirs.
- The manufacturing plant is certified ISO 9002, this is an additional pledge of quality of WABCO air reservoirs.

DESIGN FEATURES

- | | |
|---|--------------------|
| ■ Range of operating pressure (PS): | 10 ... 19 bar |
| ■ Range of temperature of service: | -50° ... +100 °C |
| ■ Exceptional temperature (1 hour, without pressure): | +120 °C |
| ■ Volume: | 0.6 ... 100 litres |
| ■ Fluid: | air |
| ■ Directive: | EN 286-2 |
| ■ Homologation: | EC |



Air Reservoirs for trucks

Steel

WABCO #			\varnothing	\leftrightarrow L1 / L2			
950 020 008 0	4 l	12.5 bar	154 mm	260 / 130 mm	2.80 kg	M 22×1.5	

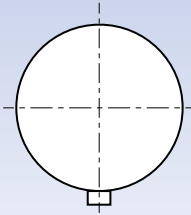
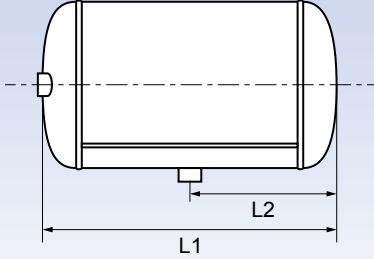
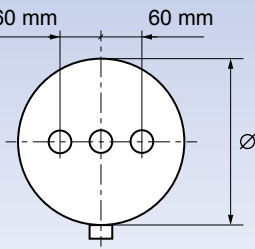
Steel

WABCO #			\varnothing	\leftrightarrow L1			
950 020 001 0	4 l	15.5 bar	144 mm	290 mm	2.80 kg	M 22×1.5	

Steel

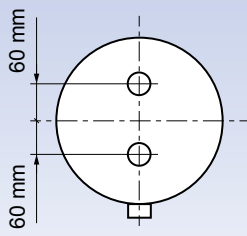
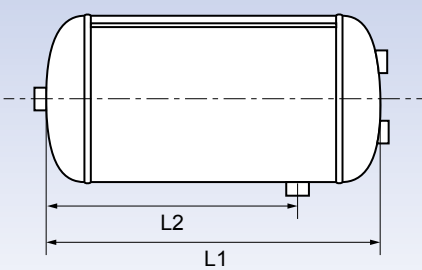
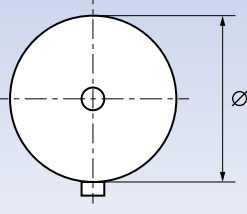
WABCO #			\varnothing	\leftrightarrow L1 / L2			
950 020 000 0	10 l	15.5 bar	206 mm	344 / 172 mm	4.50 kg	M 22×1.5	



Steel

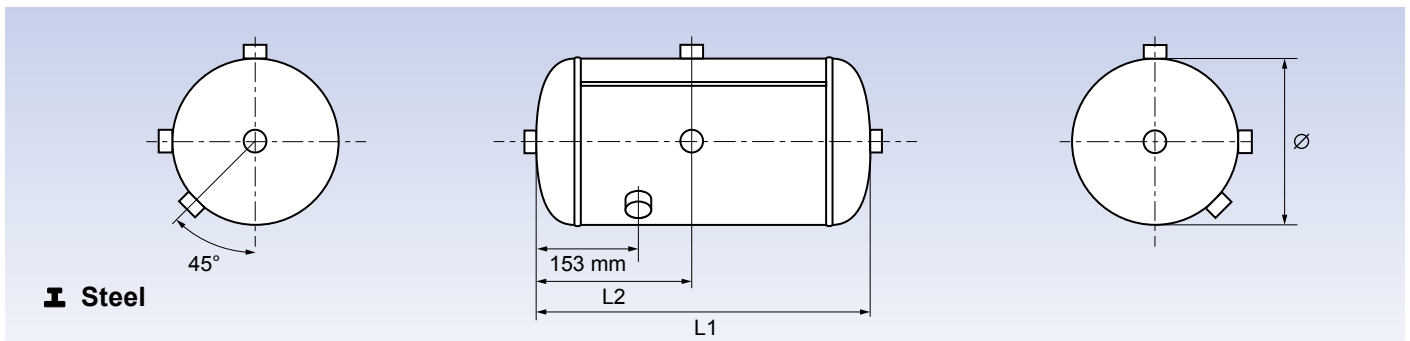
WABCO #			Ø	↔ L1 / L2			
950 020 002 0	25 l	15.5 bar	246 mm	589 / 330 mm	8.80 kg	M 22×1.5	
950 020 003 0	30 l	15.5 bar	276 mm	569 / 248.5 mm	9.40 kg	M 22×1.5	
950 020 004 0	25 l	15.5 bar	276 mm	479 / 239.5 mm	8.20 kg	M 22×1.5	
950 020 005 0	35 l	15.5 bar	276 mm	647 / 323.5 mm	10.30 kg	M 22×1.5	
950 020 006 0	20 l	15.5 bar	276 mm	396 / 156 mm	7.10 kg	M 22×1.5	
950 020 007 0	25 l	15.5 bar	246 mm	589 / 294.5 mm	8.80 kg	M 22×1.5	
950 020 009 0 *	30 l	12.5 bar	310 mm	449 / 224.5 mm	8.80 kg	M 22×1.5	
950 020 010 0 *	40 l	12.5 bar	310 mm	592 / 296 mm	11.20 kg	M 22×1.5	

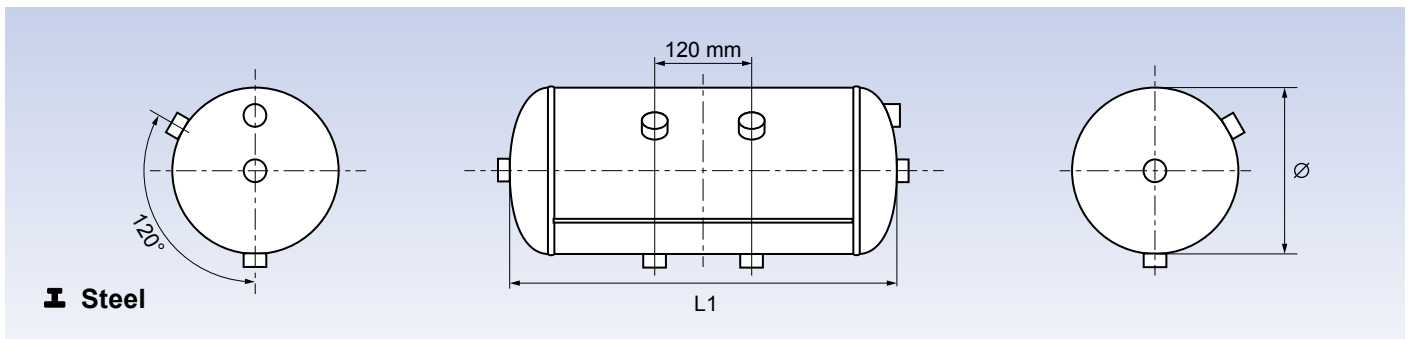
Steel

WABCO #			Ø	↔ L1 / L2			
950 020 011 0 *	30 l	14.5 bar	276 mm	550 / 385 mm	9.10 kg	M 22×1.5	

* coming soon



WABCO #							
950 020 012 0	36 l	12.5 bar	300 mm	577 / 254 mm	10.30 kg	M 22×1.5	



WABCO #							
950 020 013 0 *	30 l	13.0 bar	250 mm	686 mm	10.20 kg	M 22×1.5	

* coming soon



Air Reservoirs for trailer

Steel

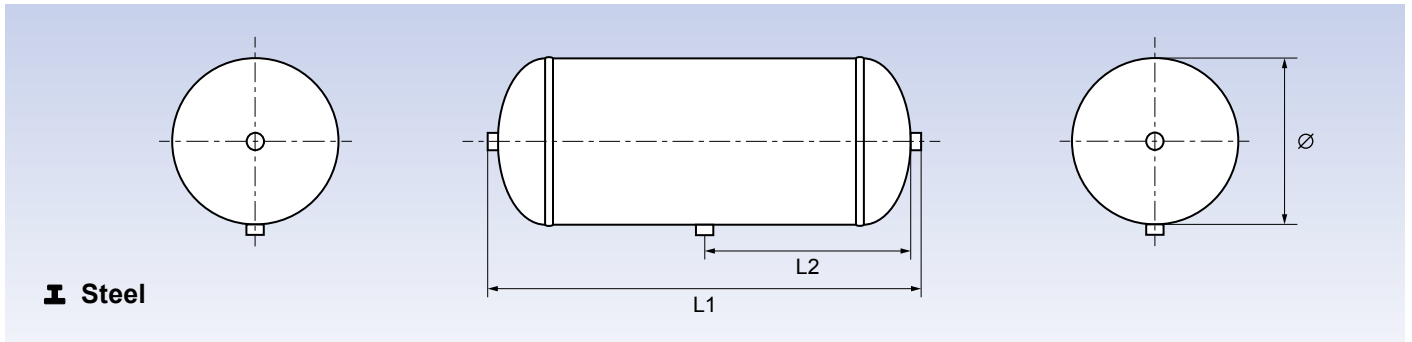
WABCO #			\emptyset	\leftrightarrow L1 / L2			
951 005 010 0	1 l	15.5 bar	102 mm	170 / 50 mm	1.13 kg	M 22×1.5	

Steel

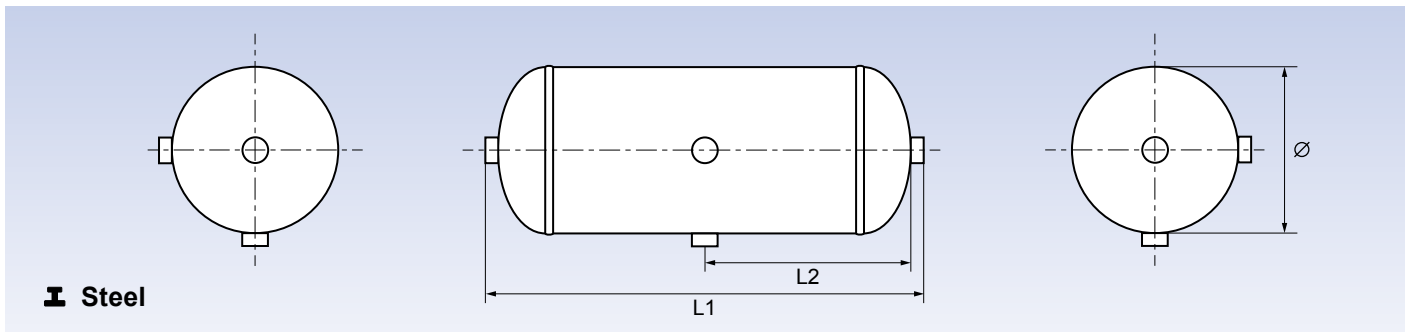
WABCO #			\emptyset	\leftrightarrow L			
950 001 003 0	0.60 l	15.5 bar	102 mm	129 mm	0.82 kg	½"-14 NPSI	
951 002 157 0	4.25 l	15.5 bar	206 mm	192 mm	2.80 kg	M 22×1.5	

Steel

WABCO #			\emptyset	\leftrightarrow L			
951 002 133 0	4.00 l	12.5 bar	206 mm	192 mm	3.40 kg	M 22×1.5	



WABCO #			Ø	↔ L1 / L2			
951 002 158 0	4 l	15.5 bar	154 mm	278 / 126 mm	2.6 kg	M 22×1.5	
950 110 002 0	10 l	20.0 bar	154 mm	615 / 295 mm	5.1 kg	M 22×1.5	



WABCO #			Ø	↔ L1 / L2			
950 620 005 0	20 l	15.5 bar	246 mm	503 / 238 mm	7.1 kg	M 22×1.5	
950 820 001 0	20 l	12.5 bar	300 mm	381 / 177.5 mm	6.8 kg	M 22×1.5	
950 628 001 0	28 l	15.5 bar	246 mm	665 / 319.5 mm	9.2 kg	M 22×1.5	
950 630 006 0	30 l	15.5 bar	246 mm	718 / 346 mm	9.7 kg	M 22×1.5	
950 830 004 0	30 l	12.5 bar	300 mm	528 / 251 mm	9.0 kg	M 22×1.5	
950 845 002 0	45 l	12.5 bar	300 mm	743 / 358.5 mm	12.2 kg	M 22×1.5	
950 860 004 0	60 l	12.5 bar	300 mm	966 / 470 mm	15.5 kg	M 22×1.5	



Steel

WABCO #			\varnothing	\longleftrightarrow L1 / L2			
950 105 001 0	5 l	20.0 bar	154 mm	341 / 157.5 mm	3.4 kg	M 22×1.5	

Steel

WABCO #			\varnothing	\longleftrightarrow L1 / L2			
950 845 001 0	45 l	12.5 bar	300 mm	740 / 357 mm	12.2 kg	M 22×1.5	
950 060 009 0	60 l	12.5 bar	300 mm	950 / 462 mm	15.4 kg	M 22×1.5	

Steel

WABCO #			\varnothing	\longleftrightarrow L1 / L2			
950 405 001 0	4.5 l	15.5 bar	206 mm	185 / 87 mm	3.0 kg	M 22×1.5	
950 406 001 0	6 l	15.5 bar	206 mm	241 / 115 mm	3.0 kg	M 22×1.5	
950 410 004 0	10 l	15.5 bar	206 mm	368 / 178.5 mm	4.7 kg	M 22×1.5	
950 410 902 0	10 l	15.5 bar	206 mm	355 / 172 mm	4.5 kg	M 22×1.5	

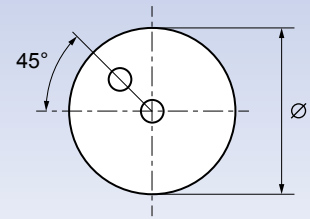
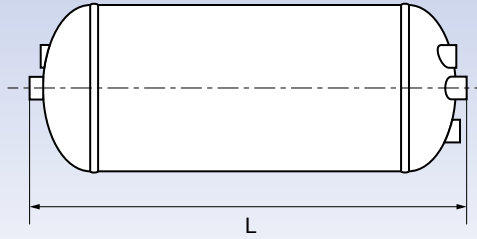
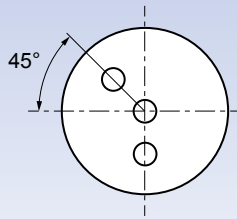


Air Reservoirs

for trailer

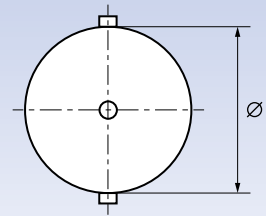
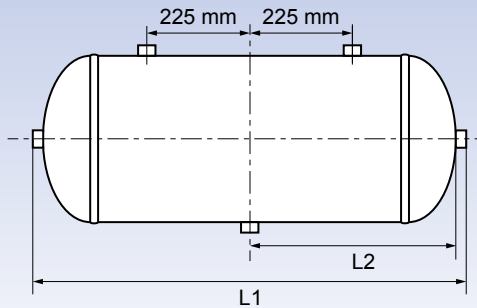
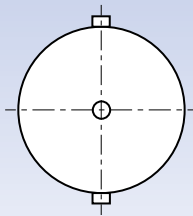


WABCO #							
	l	bar	mm	L1 / L2 mm	kg	M 22×1.5	
950 415 005 0	15 l	15.5 bar	206 mm	527 / 257 mm	6.3 kg	M 22×1.5	
950 515 003 0	15 l	15.5 bar	246 mm	380 / 181 mm	5.9 kg	M 22×1.5	
950 516 004 0	16 l	15.5 bar	246 mm	411 / 197 mm	6.0 kg	M 22×1.5	
950 420 003 0	20 l	15.5 bar	206 mm	691 / 340 mm	8.0 kg	M 22×1.5	
950 520 003 0	20 l	15.5 bar	246 mm	495 / 239 mm	7.2 kg	M 22×1.5	
950 720 005 0	20 l	14.5 bar	276 mm	414 / 197.5 mm	6.7 kg	M 22×1.5	
950 722 002 0	22 l	14.5 bar	276 mm	452 / 216.5 mm	7.2 kg	M 22×1.5	
950 525 001 0	25 l	15.5 bar	246 mm	601 / 292 mm	8.6 kg	M 22×1.5	
950 527 005 0	27 l	15.5 bar	246 mm	645 / 178.5 mm	8.9 kg	M 22×1.5	
950 430 001 0	30 l	15.5 bar	206 mm	992 / 490.5 mm	11.2 kg	M 22×1.5	
950 530 002 0	30 l	15.5 bar	246 mm	709 / 346 mm	10.0 kg	M 22×1.5	
950 730 007 0	30 l	14.5 bar	276 mm	582 / 282 mm	9.0 kg	M 22×1.5	
950 537 001 0	37 l	15.5 bar	246 mm	862 / 422 mm	11.9 kg	M 22×1.5	
950 540 001 0	40 l	15.5 bar	246 mm	927 / 455 mm	12.7 kg	M 22×1.5	
950 740 002 0	40 l	14.5 bar	276 mm	758 / 369.5 mm	11.5 kg	M 22×1.5	
950 740 906 0	40 l	12.5 bar	310 mm	618 / 300 mm	11.2 kg	M 22×1.5	
950 760 002 0	60 l	14.5 bar	276 mm	1108 / 544.5 mm	16.2 kg	M 22×1.5	
950 060 003 0	60 l	12.5 bar	310 mm	893 / 437 mm	15.2 kg	M 22×1.5	
950 060 004 0	60 l	10.0 bar	396 mm	580 / 280 mm	13.9 kg	M 22×1.5	
950 560 002 0	60 l	15.5 bar	246 mm	1365 / 674 mm	18.0 kg	M 22×1.5	
950 080 002 0	80 l	10.0 bar	396 mm	750 / 365 mm	17.2 kg	M 22×1.5	
950 100 002 0	100 l	10.0 bar	396 mm	915 / 447 mm	20.5 kg	M 22×1.5	



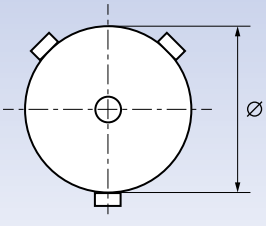
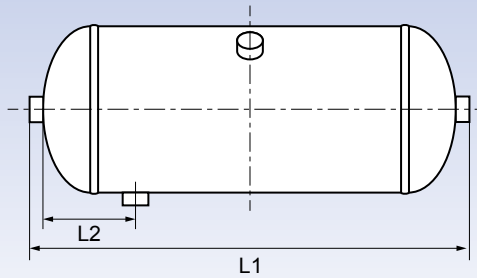
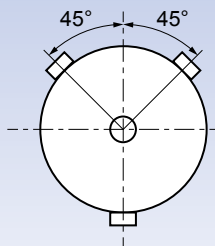
Steel

WABCO #							
950 315 003 0	15 l	15.5 bar	206 mm	546.5 mm	6.7 kg	M 22×1.5	



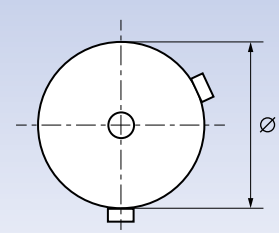
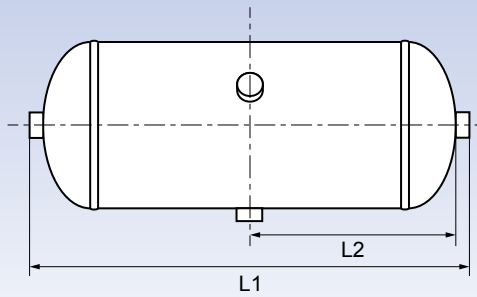
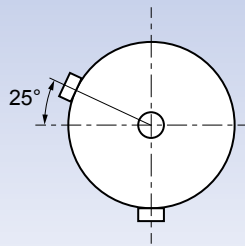
Steel

WABCO #							
950 630 001 0	30 l	12.5 bar	246 mm	708 / 341 mm	10.4 kg	½"-14 NPSI	



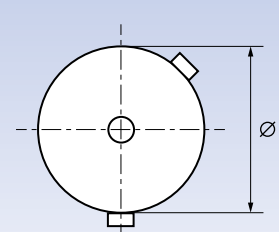
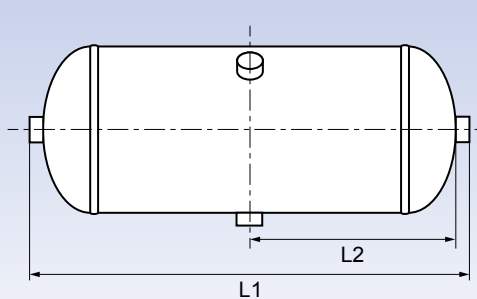
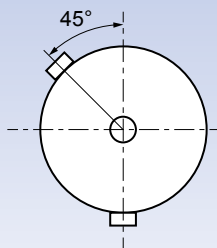
Steel

WABCO #							
950 630 002 0	30 l	12.5 bar	246 mm	708 / 110 mm	10.4 kg	½"-14 NPSI	



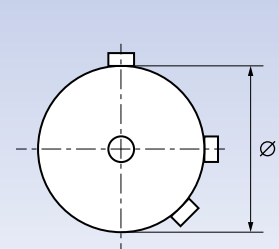
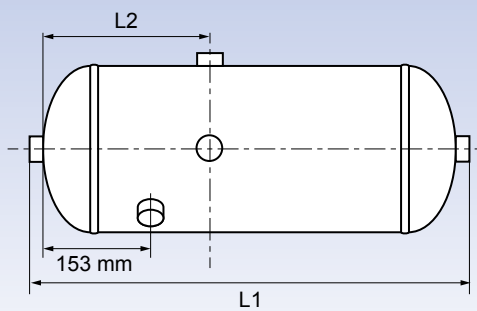
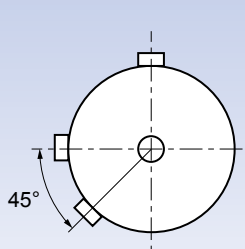
Steel

WABCO #							
950 630 005 0	30 l	15.5 bar	246 mm	718 / 346 mm	9.7 kg	M 22×1.5	



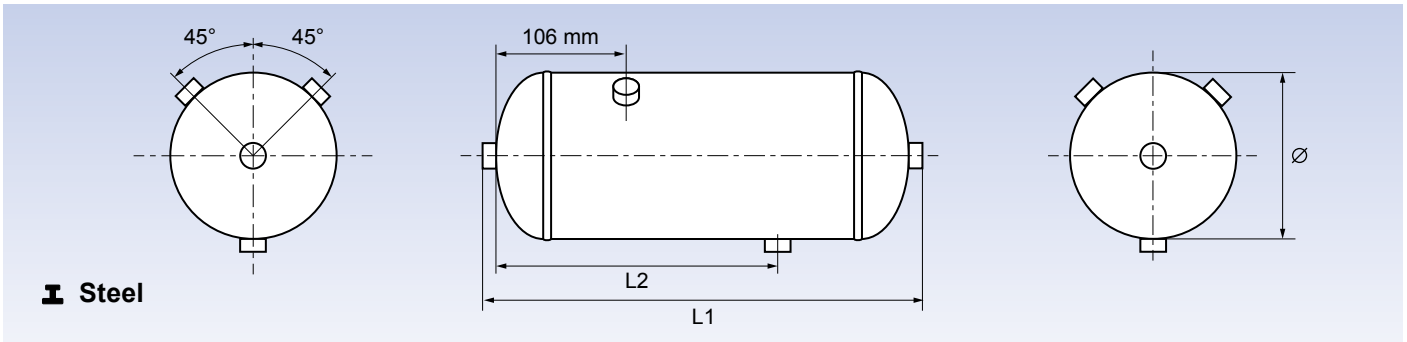
Steel

WABCO #							
950 620 007 0	20 l	15.5 bar	246 mm	504 / 239 mm	7.1 kg	M 22×1.5	

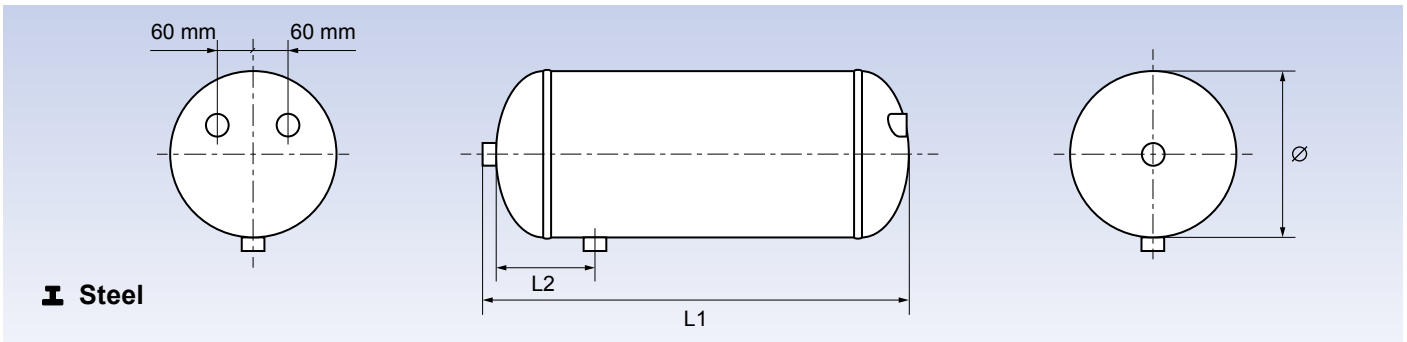


Steel

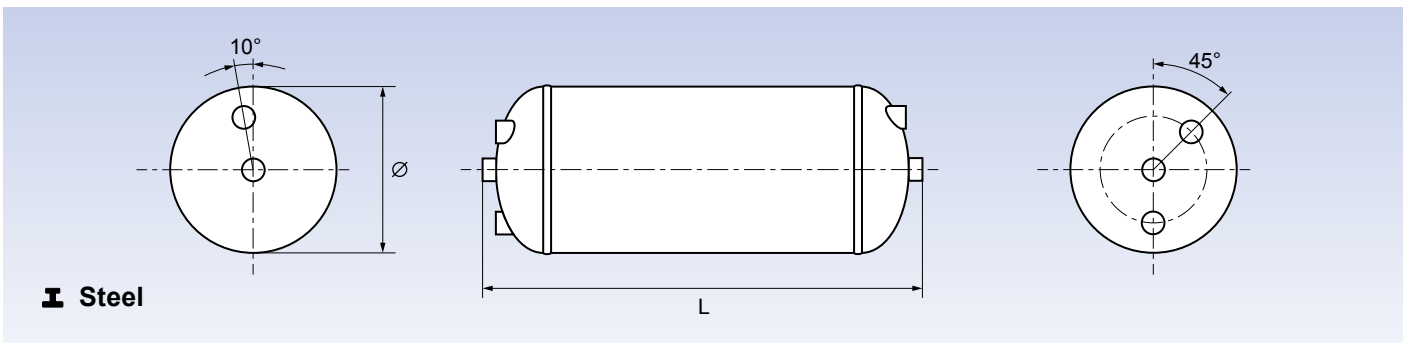
WABCO #							
950 836 001 0	36	12.5 bar	300 mm	603 / 254 mm	10.2 kg	M 22×1.5	



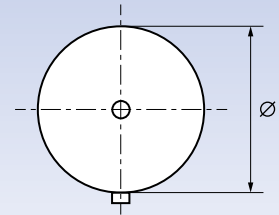
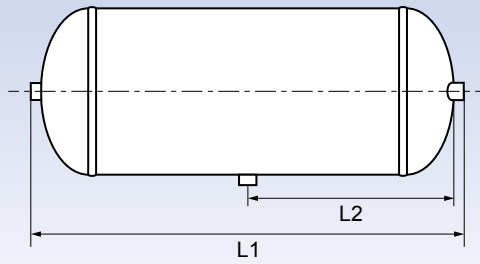
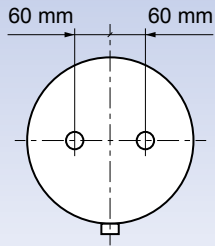
WABCO #							
950 310 001 0	10 l	15.5 bar	206 mm	386 / 254.5 mm	4.9 kg	½" NPSI	



WABCO #							
950 620 006 0	20 l	15.5 bar	246 mm	487 / 107 mm	7.4 kg	M 22×1.5	



WABCO #							
950 730 006 0	30 l	14.5 bar	276 mm	590.5 mm	9.7 kg	M 22×1.5	



Alu

WABCO #			Ø	↔ L1 / L2			
950 530 903 0	30 l	15.5 bar	246 mm	729.5 / 353.5 mm	4.7 kg	M 22×1.5	
950 740 904 0	40 l	15.5 bar	276 mm	765.5 / 371 mm	5.9 kg	M 22×1.5	
950 960 002 0	60 l	12.5 bar	310 mm	907 / 441.5 mm	7.8 kg	M 22×1.5	
950 080 903 0	80 l	10.0 bar	396 mm	761.5 / 368 mm	10.1 kg	M 22×1.5	



Clamp bands / Drain valves

A WABCO #	B WABCO #	Ø	
451 999 206 2	950 405 351 2	206 mm	
451 999 246 2	950 515 351 2	246 mm	
451 999 276 2	950 720 351 2	276 mm	
451 999 310 2	950 949 351 2	310 mm	
451 999 396 2	950 001 351 2	396 mm	

WABCO #		Type	
934 300 001 0	M 22×1.5	manual (w/o ring)	
934 300 002 0	R 1/2"	manual, with sealing	
934 300 003 0	M 22×1.5	manual	
934 300 038 0	M 22×1.5	manual, with sealing	
934 301 000 0	M 22×1.5	automatic ($\Delta p < 0.4$ bar)	
934 301 003 0	M 22×1.5	automatic ($\Delta p = 0.5 \pm 0.2$ bar)	



Index

WABCO #	
451 999 206 2	17
451 999 246 2	17
451 999 276 2	17
451 999 310 2	17
451 999 396 2	17
934 300 001 0	17
934 300 002 0	17
934 300 003 0	17
934 300 038 0	17
934 301 000 0	17
934 301 003 0	17
950 001 003 0	9
950 001 351 2	17
950 020 000 0	6
950 020 001 0	6
950 020 002 0	7
950 020 003 0	7
950 020 004 0	7
950 020 005 0	7
950 020 006 0	7
950 020 007 0	7
950 020 008 0	6
950 020 009 0	7
950 020 010 0	7
950 020 011 0	7
950 020 012 0	8
950 020 013 0	8
950 060 003 0	12
950 060 004 0	12

WABCO #	
950 060 009 0	11
950 080 002 0	12
950 080 903 0	16
950 100 002 0	12
950 105 001 0	11
950 110 002 0	10
950 310 001 0	15
950 315 003 0	13
950 405 001 0	11
950 405 351 2	17
950 406 001 0	11
950 410 004 0	11
950 410 902 0	11
950 415 005 0	12
950 420 003 0	12
950 430 001 0	12
950 515 003 0	12
950 515 351 2	17
950 516 004 0	12
950 520 003 0	12
950 525 001 0	12
950 527 005 0	12
950 530 002 0	12
950 530 903 0	16
950 537 001 0	12
950 540 001 0	12
950 560 002 0	12
950 620 005 0	10
950 620 006 0	15

WABCO #	
950 620 007 0	14
950 628 001 0	10
950 630 001 0	13
950 630 002 0	13
950 630 005 0	14
950 630 006 0	10
950 720 005 0	12
950 720 351 2	17
950 722 002 0	12
950 730 006 0	15
950 730 007 0	12
950 740 002 0	12
950 740 904 0	16
950 740 906 0	12
950 760 002 0	12
950 820 001 0	10
950 830 004 0	10
950 836 001 0	14
950 845 001 0	11
950 845 002 0	10
950 860 004 0	10
950 949 351 2	17
950 960 002 0	16
951 002 133 0	9
951 002 157 0	9
951 002 158 0	10
951 005 010 0	9

Cross references

WABCO #	OE	OE #
950 020 000 0	Daimler	A 007 432 1101
950 020 001 0	Daimler	A 006 432 3401
950 020 002 0	Daimler	A 007 432 0301
950 020 003 0	Daimler	A 006 432 5401
950 020 004 0	Daimler	A 006 432 5301
950 020 005 0	Daimler	A 006 432 5601
950 020 006 0	Daimler	A 006 432 4301
950 020 007 0	Daimler	A 006 432 4401

WABCO #	OE	OE #
950 020 008 0	MAN	81.514.010.194
950 020 009 0	MAN	81.514.010.239 81.514.016.013
950 020 010 0	MAN	81.514.010.241 81.514.016.015
950 020 011 0	Scania	1357950 488217
950 020 012 0	DAF	1733544
950 020 013 0	Renault	5010525446



a **WORLD** of
DIFFERENCE

Safety • Efficiency • Connectivity

WABCO

WABCO (NYSE: WBC) is a leading global supplier of technologies and services that improve the safety, efficiency and connectivity of commercial vehicles. Founded nearly 150 years ago, WABCO continues to pioneer breakthrough innovations for advanced driver assistance, braking, stability control, suspension, transmission automation and aerodynamics. Partnering with the transportation industry as it maps a route toward autonomous driving, WABCO also uniquely connects trucks, trailers, cargo, drivers, business partners and fleet operators through advanced fleet management systems and mobile solutions. WABCO reported sales of \$2.8 billion in 2016. Headquartered in Brussels, Belgium, WABCO has 13,000 employees in 40 countries. For more information, visit

www.wabco-auto.com

DEALER

WABCO