



KMAX GEN-2. Superb mileage, with improved traction.

Welcome to the next Generation.



GOODYEAR



New Goodyear KMAX GEN-2 range

KMAX GEN-2 is the new on-road range predominantly for regional haul delivering top-class mileage and great all-season capability throughout the tyre life. The new KMAX GEN-2 delivers the same excellent mileage and thanks to improved traction allows fleets to be ready for any road condition. The KMAX GEN-2 range is also compatible with new emerging drive modes (electric drives).


The new KMAX GEN-2 range features

- ✔ **Increased traction and all-weather capabilities throughout the tyre life for inter-regional and regional fleets**
- ✔ **Optimised damage resistance, treadwear performance and improved casing protection**
- ✔ **Dual tread compound for higher fuel efficiency without compromising on mileage performance**



Goodyear truck tyre line-up

The right tyre for every job

Transportation	Goods		Construction		People	
Type of road	Highway	Regional	Mixed service	Off-road	City	Inter-regional
	FUELMAX Performance			OFF ROAD		
	FUELMAX GEN-2		OMNITRAC MSS II / MSD II			
	KMAX GEN-2		OMNITRAC		URBAN	MARATHON COACH
 WINTER	ULTRA GRIP MAX				URBAN WTS	ULTRA GRIP COACH

KMAX S GEN-2 and KMAX D GEN-2 are developed specifically for vehicles operating predominantly in regional haul applications delivering top-class mileage and enhanced traction throughout the tyre life.

KMAX S GEN-2

[STEER]

The new KMAX S GEN-2 steer axle tyre is adapted to the requirements of changing load conditions on a wide range of roads and applications.

Featuring the IntelliMax Rib Technology and Flexomatic Sipes for excellent traction and short braking distances throughout the tyre life.

A cool running and high abrasion resistant tread compound provides excellent mileage and high fuel efficiency.



→ **Great mileage combined with enhanced grip throughout the full tyre life**

Features

How it works

Advantages

1 Proven IntelliMax Rib Technology	Stiffener bridges in the centre grooves connect when the tyre rolls through the footprint, creating a stiffer design and limiting wear	Precise handling, excellent mileage
2 Deep "Flexomatic" sipes	"Flexomatic" sipes close when rolling through the footprint allowing the tread blocks to interlock, making the tread stiffer	Short braking distances throughout tyre life. High mileage; 3PMSF capability combined with low rolling resistance
3 Cool running/high abrasion resistant tread compound	The chemical formulation and polymer network ensures a low rolling resistance combined with excellent treadwear performance	High mileage and fuel efficiency
4 Optimised casing shape	Provides a constant and regular footprint in a wide range of load conditions throughout the tyre's life	Regular treadwear over the full tyre life, especially in the shoulders, providing excellent mileage

Technical details table

Size	Load Index	Speed Symbol	Poss. Rim Widths	Comments	Fuel Efficiency	Wet Grip	Noise Emission (dB)
295/80 R 22.5	154/149 M		8.25/9.00		C	B	74
315/80 R 22.5	156/150 L	154/150 M	9.00/9.75		C	B	71
315/70 R 22.5	156/150 L		9.00/9.75	High load	C	B	72
385/65 R 22.5	160 K	158 L	11.75		B	B	70
295/60 R 22.5	150/147 K	149/146 L	9.00/9.75		C	B	71
315/60 R 22.5	154/148 L		9.00/9.75	High load, Under development			
385/55 R 22.5	160 K	158 L	11.75		B	B	71
355/50 R 22.5	156 K		11.75	High load, Under development			
375/45 R 22.5	156 L		11.75	Under development			

Retreading and regrooving

The KMAX S GEN-2 is both retreadable and regroovable and has been developed according to the 'Multiple Life Concept' approach – allowing fleets to make the best use of their tyre assets and substantially reducing their cost per kilometre.

Regrooving recommendations for 5-rib and 6-rib tyres



New tyre tread



80% worn



Regrooved tyre



New tyre tread



80% worn



Regrooved tyre

Max. regrooving depth 3mm, regrooving width 6mm.



KMAX D GEN-2

[DRIVE]

The new KMAX D GEN-2 drive axle tyre is specifically adapted to the requirements of changing load conditions in a variety of applications.

Featuring a density array of deep sipes and grooves for excellent traction throughout the full tyre life. The dual tread compound and regular footprint pressure distribution provides excellent mileage and high fuel efficiency.



→ **High mileage potential combined with enhanced traction and durability**

Features

How it works

Advantages

1	High density and increased depth of sipes and grooves	6% more length of biting edges until end of tyre life, interlocking with the road surfaces, compared to its predecessor	Increased traction and high removal mileage
2	Dynamic stone ejecting design	Grooves open under torque releasing trapped stones and avoiding drilling into the casing	Improved casing protection and tyre durability
3	Large shoulder grooves	Openings in the shoulder ribs create biting edges for increased traction and effectively evacuate water and mud	High traction throughout complete tyre life
4	Dual tread compound, combining two layers of different rubber	The top compound provides high abrasion resistance. The base compound offers low rolling resistance	High mileage combined with fuel efficiency
5	Regular footprint pressure distribution	The KMAX D GEN-2 casing has been adapted and shows a stable contact pressure over the tyre life	High mileage in a wide range of applications and load conditions; regular wear until end of tyre life

Technical details table

Size	Load Index	Speed Symbol	Poss. Rim Widths	Comments	Fuel Efficiency	Wet Grip	Noise Emission (dB)
295/80 R 22.5	152/148 M		8.25/9.00		D	C	72
315/80 R 22.5	156/150 L	154/150 M	9.00/9.75		D	C	72
315/70 R 22.5	154/150 L	152/148 M	9.00/9.75		C	B	72
295/60 R 22.5	150/147 K	149/146 L	9.00/9.75	Under development			
315/60 R 22.5	152/148 L		9.00/9.75		D	B	73
295/55 R 22.5	147/145 K		9.00/9.75	Under development			
315/45 R 22.5	147/145 L			Under development			

Retreading and regrooving

The KMAX D GEN-2 is both retreadable and regroovable and has been developed according to the 'Multiple Life Concept' approach – allowing fleets to make the best use of their tyre assets and substantially reducing their cost per kilometre.

Regrooving recommendations



New tyre tread



80% worn



Regrooved tyre

Max. regrooving depth 3mm, regrooving width 6mm.



KMAX T 19.5" and 22.5"

[TRAILER]

The KMAX T tyre offers superb mileage performance due to its multi-radius cavity share and high wearable rubber volume associated to an innovative tread compound, which resists groove cracking and tread chunking.



Features

How it works

Advantages

1	Improved casing and tuned footprint	The KMAX T casing has been adapted to more variations in payload and shows a regular footprint pressure distribution over the whole tread surface	Higher mileage performance
2	Innovative tread compound	The chemical formulation of the compound reduced heat generation. The strong links in the polymer network provide high abrasion resistance	Low rolling resistance combined with excellent treadwear resistance for high mileage potential
3	High wearable rubber volume	The high net-to-gross ratio in combination with the deep tread results in a slow wearing process	Excellent mileage potential
4	Stone ejecting groove angles	Reduced stone holding and improved self cleaning capabilities	High resistance to groove cracking
5	Improved groove profile	Zig-zag shaped grooves provide additional gripping edges to the circumferential ribs	Excellent braking on wet

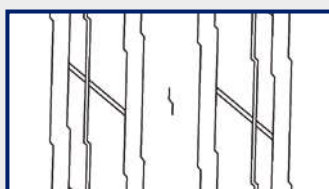
Technical details table

Size	Load Index	Speed Symbol	Poss. Rim Widths	Comments	Fuel Efficiency	Wet Grip	Noise Emission (dB)
385/55R22.5	160 (158)	K (L)	11.75/12.25		B	B	71 🗣️
385/65R22.5	164 (158)	K (L)	11.75/12.25	High load	B	C	71 🗣️
425/65R22.5	165	K	12.25/14.00		B	B	72 🗣️
435/50R19.5	160	J	14.00/15.00	RFID	B	C	73 🗣️
445/65R22.5	169	K	13.00/15.00		B	B	72 🗣️

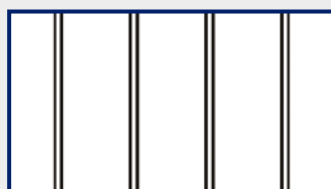
Retreading and regrooving

KMAX T tyres are retreadable and regroovable, allowing fleets to make use of the “Multiple Life Concept” (new – regroove – retread – regroove) for optimised cost/km. Most KMAX T sizes are available as TreadMax mold cure retreads.

Regrooving recommendations



New tyre tread



80% worn



Regrooved tyre

Max. regrooving depth 3mm, regrooving width 6-8mm. Retreadable by Goodyear TreadMax.



KMAX T 17.5" & 19.5" low platform tyre

[TRAILER]

The KMAX T 17.5" & 19.5" range is the ideal choice for low platform application. Its tread design and robust construction offers all season mobility (confirmed by M+S and Three Peak Mountain Snowflake) combined with optimal mileage and robustness even in demanding low platform usage.



Features

How it works

Advantages

1	4-rib tread design	Optimal pressure distribution in the footprint. High contact stresses are distributed over a wide surface	Robust tread with high mileage, even wear and low rolling resistance
2	Longitudinal and radial sipes	Sipes create many biting edges that provide more grip on wet roads and snow	High removal mileage with all-season mobility and 3PM SF marking
3	Groove edges	Grooves designed along zig-zag lines provide additional gripping edges to the circumferential ribs	Improved all-weather mobility
4	Improved bead construction	Bead construction is engineered for the demanding applications of low platform trailers	High casing durability
5	Tread compound	Chemical formulation to withstand the high contact stresses typical with Low Platform Trailers	High mileage potential and damage resistance

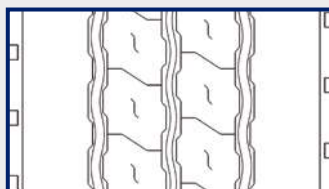
Technical details table

Size	Load Index	Speed Symbol	Poss. Rim Widths	Comments	Fuel Efficiency	Wet Grip	Noise Emission (dB)
205/65R17.5	129/127 (132/132)	K (F)	6.00/6.75		C	B	71
215/75R17.5	135/133	J	6.00/6.75		C	B	67
235/75R17.5	143/141 (144/144)	J (F)	6.75/7.50		C	B	69
245/70R17.5	143/141 (146/146)	J (F)	6.75/7.50		B	B	70
245/70R19.5	141/140	J	6.75/7.50		C	B	69
265/70R19.5	143/141	J	7.50/8.25		B	B	70
285/70R19.5	150/148	J	8.25/9.00		B	B	70
265/55R19.5	141/140 (142/142)	J (G)	8.25	Under development			

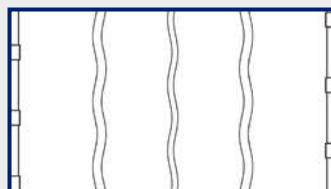
Retreading and regrooving

KMAX T tyres are retreadable and regroovable, allowing fleets to make use of the "Multiple Life Concept" (new – regroove – retread – regroove) for optimised cost/km.

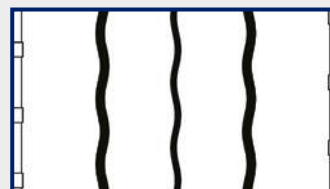
Regrooving recommendations



New tyre tread



80% worn



Regrooved tyre

Max. regrooving depth 3mm, regrooving width 6mm.



RFID Identification

RFID tags are integrated in all KMAX S and D GEN-2 tyres

An RFID tag is embedded inside the tyre and allows simple identification and connectivity to tyre management and tracking systems. The RFID contains ISO standard information as per SGTIN96 coding.

Tyres can communicate with a cloud network on an individual serial number level therefore allowing much better tyre flow management.

RFID logo:



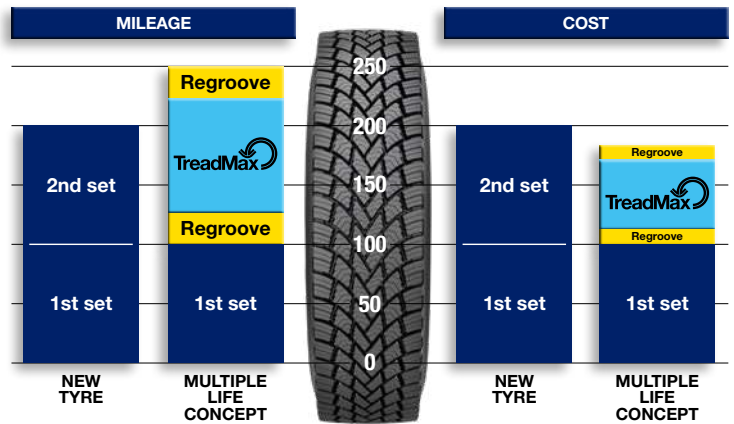
On Non Serial Side



On Serial Side



Goodyear enables fleets to optimise the performance of their latest Goodyear truck tyres via the exclusive TreadMax MoldCure retreading process. By utilising only MaxTechnology casings, Goodyear TreadMax are produced using the same tread pattern and materials that are used for new tyres. In doing so, Goodyear TreadMax offers a similar performance to new tyres and enables fleets to maximise their investment in Goodyear's latest product developments.



GOODYEAR TOTAL MOBILITY

TYRES

A range of more than 400 truck, bus and premium new and retreaded tyres.

SOLUTIONS

Proactive Solutions
FleetOnlineSolutions
ServiceLine24h
Multiple Life Concept

SERVICE NETWORK

TruckForce is Goodyear's extensive truck tyre service network, with over 2,000 locations across Europe.

FLEET

Whether your business is large or small, Goodyear Total Mobility is by your side.